

# Neubau Haus 3-4

ANSICHT OST  
ANSICHT WEST

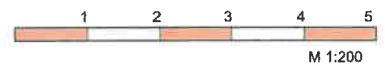
---



Haus 3    Haus 4



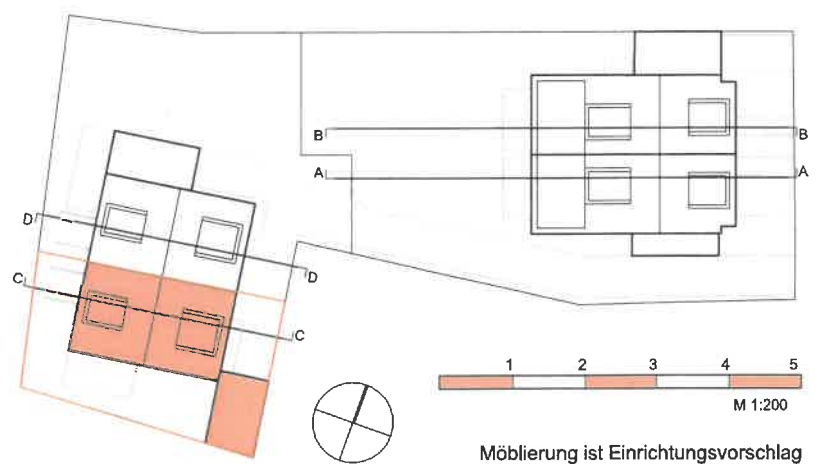
Haus 4    Haus 3



# Neubau Haus 3

Steinweg 1a, 65824 Schwalbach am Taunus

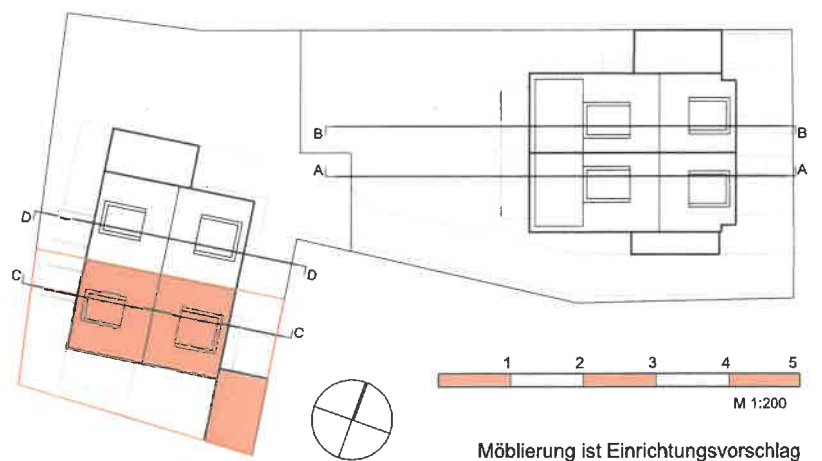
ANSICHT SÜD



# Neubau Haus 3

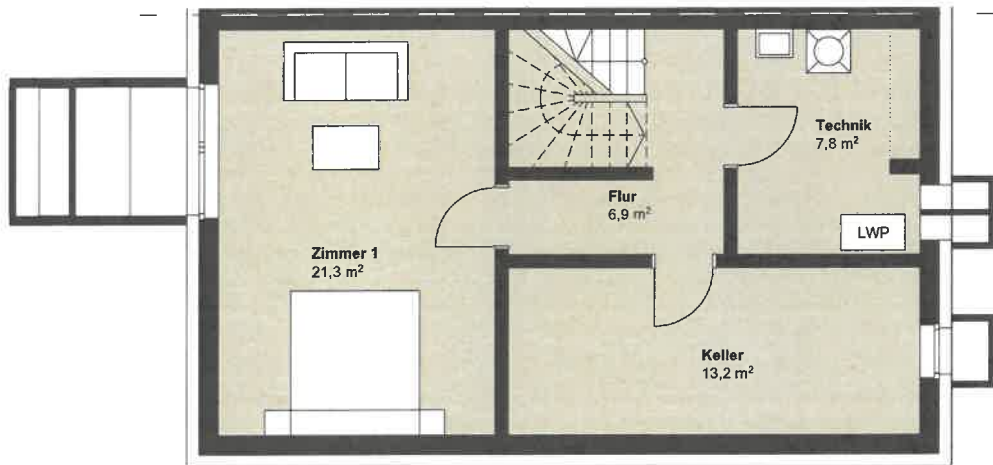
Steinweg 1a, 65824 Schwalbach am Taunus

Schnitt C-C



# Neubau Haus 3

Steinweg 1a, 65824 Schwalbach am Taunus



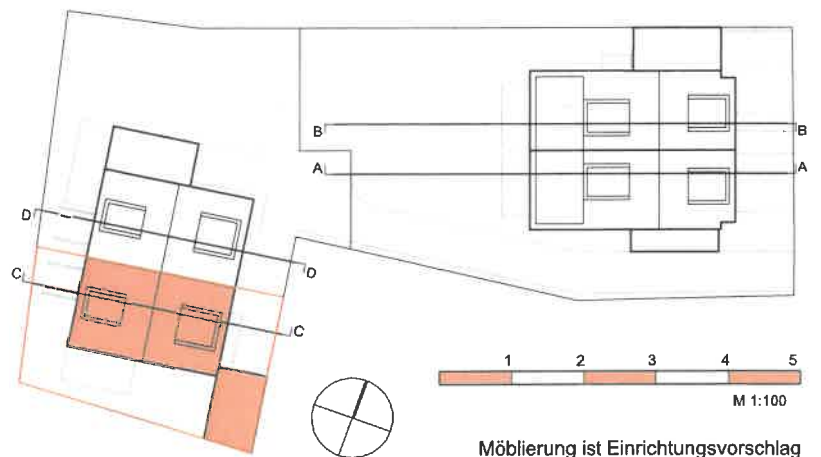
## Souterrain:

### Wohnfläche

Zimmer 1	21,3 m <sup>2</sup>
<b>Gesamt:</b>	<b>21,3 m<sup>2</sup></b>

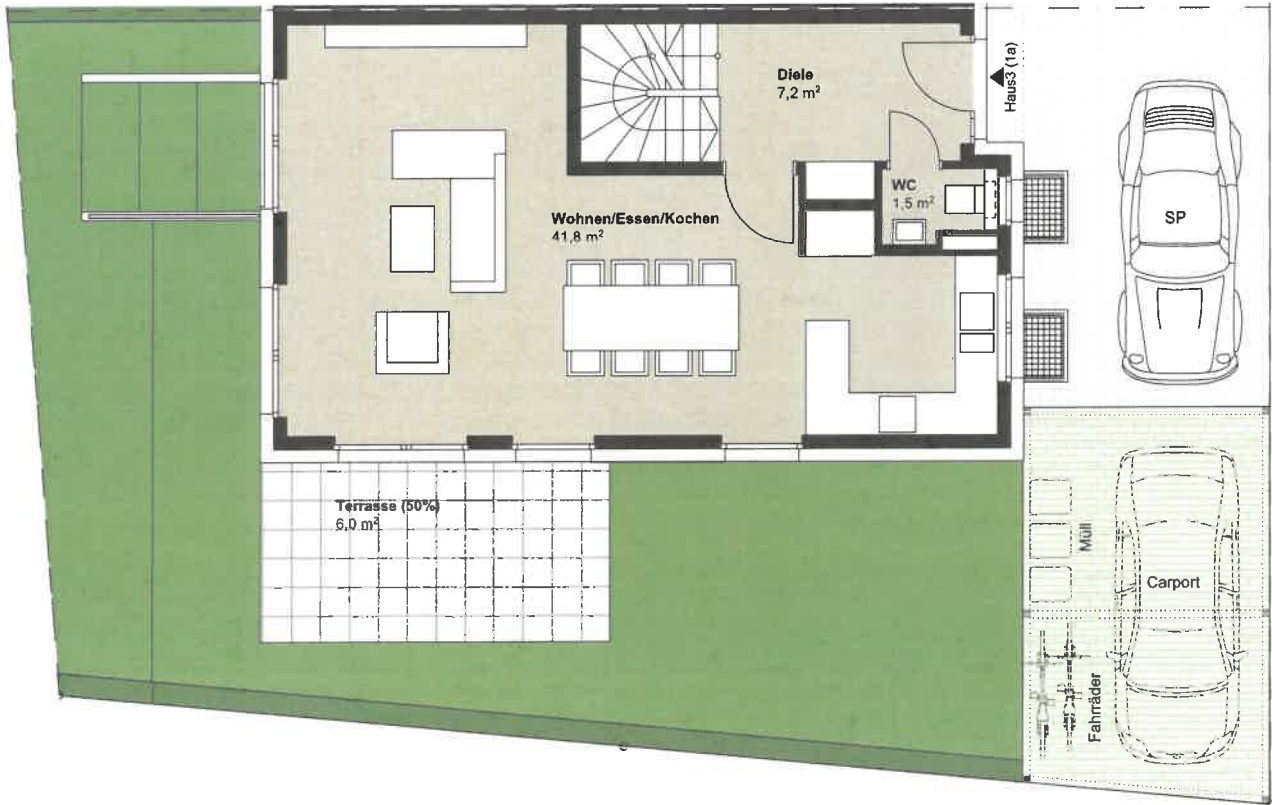
### Nutzungsfläche

Flur	6,9 m <sup>2</sup>
Keller	13,2 m <sup>2</sup>
Technik	7,8 m <sup>2</sup>
<b>Gesamt:</b>	<b>27,9 m<sup>2</sup></b>



# Neubau Haus 3

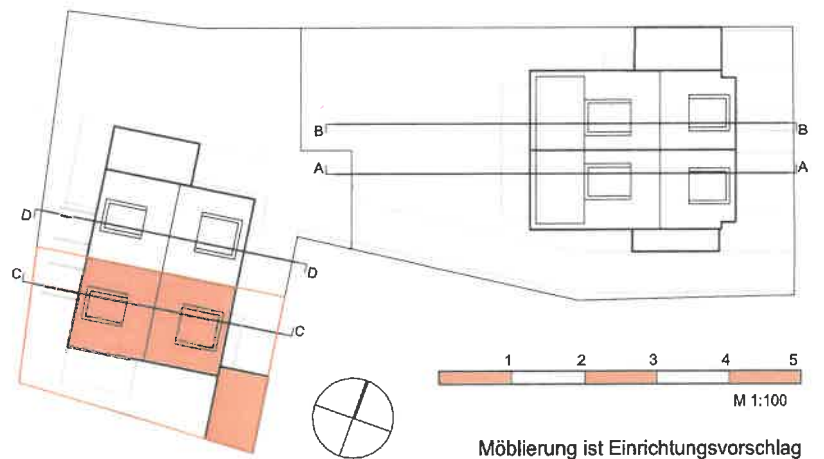
Steinweg 1a, 65824 Schwalbach am Taunus



**EG:**

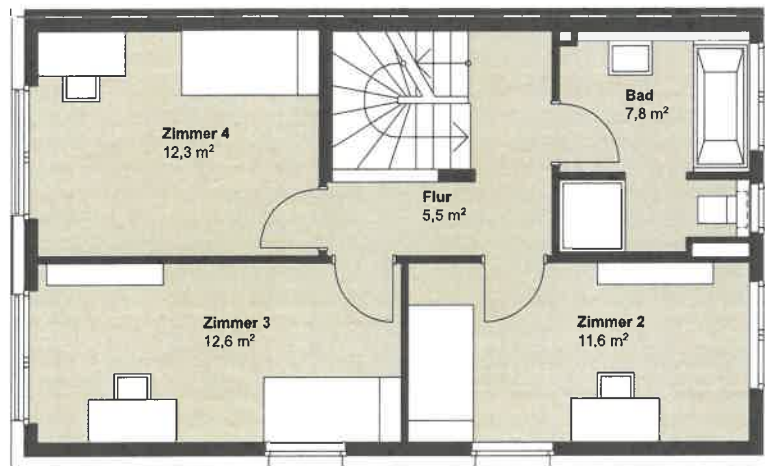
## Wohnfläche

Terrasse (50%)	6,0 m <sup>2</sup>
Diele	7,2 m <sup>2</sup>
WC	1,5 m <sup>2</sup>
Wohnen/Essen/Kochen	41,8 m <sup>2</sup>
<b>Gesamt:</b>	<b>56,5 m<sup>2</sup></b>



# Neubau Haus 3

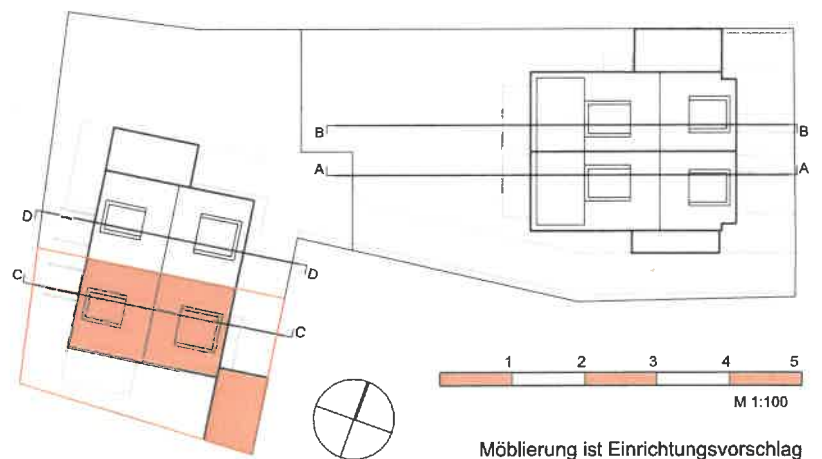
Steinweg 1a, 65824 Schwalbach am Taunus



**OG:**

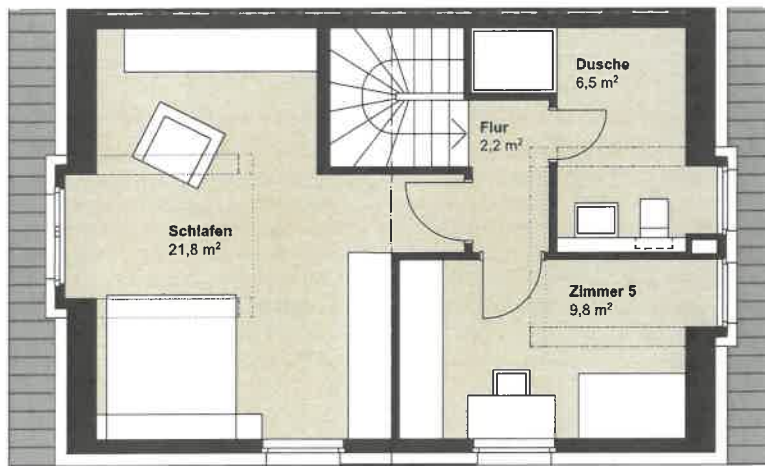
Wohnfläche

Bad	7,8 m <sup>2</sup>
Flur	5,5 m <sup>2</sup>
Zimmer 2	11,6 m <sup>2</sup>
Zimmer 3	12,6 m <sup>2</sup>
Zimmer 4	12,3 m <sup>2</sup>
<b>Gesamt:</b>	<b>49,8 m<sup>2</sup></b>



# Neubau Haus 3

Steinweg 1a, 65824 Schwalbach am Taunus



## DG:

### Wohnfläche

Dusche	6,5 m <sup>2</sup>
Flur	2,2 m <sup>2</sup>
Schlafen	21,8 m <sup>2</sup>
Zimmer 5	9,8 m <sup>2</sup>
<b>Gesamt:</b>	<b>40,3 m<sup>2</sup></b>

